

[theepochtimes.com](https://www.theepochtimes.com)

'Metal-Like Objects' Found in 94 Percent of Group Who Had Symptoms After Taking mRNA Vaccines: Study

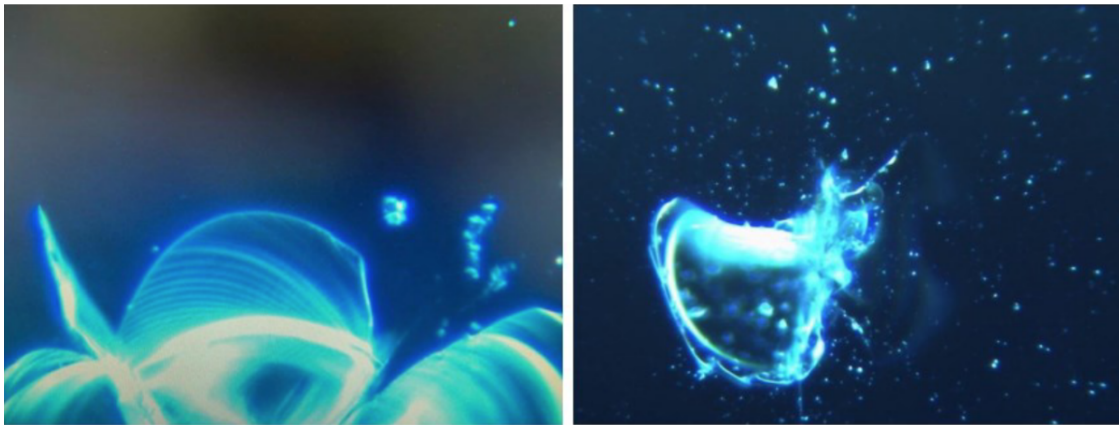
Enrico Trigoso

12-15 minutes

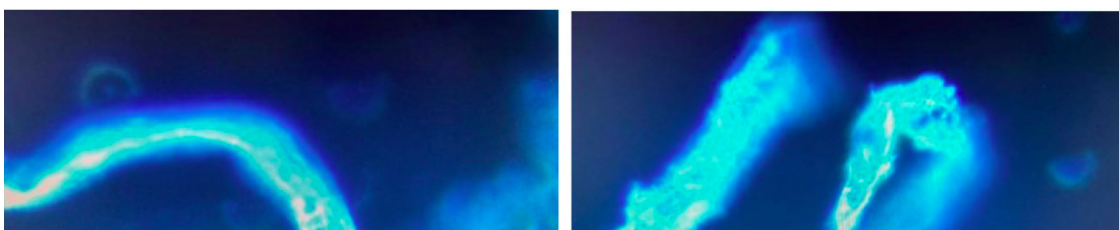
Three Italian surgeons [conducted a study](#) analyzing blood from 1,006 people who developed symptoms after they got a Pfizer/BioNTech or Moderna mRNA injection and found 94 percent of them to have “aggregation of erythrocytes and the presence of particles of various shapes and sizes of unclear origin,” one month after inoculation.

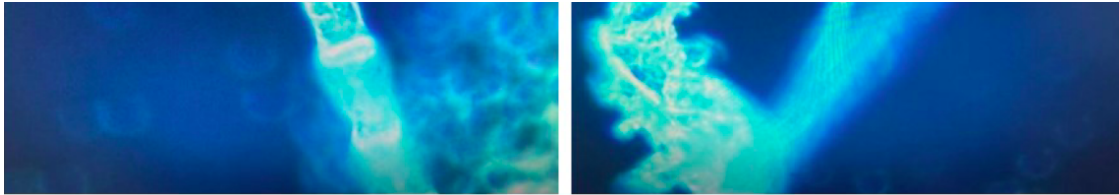
Erythrocytes are a type of red blood cell that carries oxygen and carbon dioxide.

“What seems plain enough is that metallic particles resembling [graphene](#) oxide and possibly other metallic compounds ... have been included in the cocktail of whatever the manufacturers have seen fit to put in the so-called mRNA ‘vaccines,’” the authors wrote in the study’s discussion and conclusions.



An example of the complex and structured crystal/lamellar organization at 120x magnification. In the picture on the right side a “module” from the morphology and recurrent structuring occurring with great frequency. The aggregating forces are guided by the negative entropic context. (Courtesy of IJVTPR)





Here at 120x magnification (3xmagnification digitally produced) (a) and (b) show tubular formations that seem to be in different aggregative stages. (Courtesy of IJVTPR)

Franco Giovannini, Riccardo Benzi Cipelli, and Gianpaolo Pisano, are the surgeons who authored the study, which was published on Aug. 12 in the International Journal of Vaccine Theory, practice, and Research (IJVTPR).

Table 1
Demographic Data on Cases Studied with
Dark-Field Microscopy

Grouping by Age	Males	%	Females	%	All	%
10-20	16	3.76%	4	0.69%	20	1.99%
21-30	29	6.81%	25	4.31%	54	5.37%
31-40	105	24.65%	43	7.41%	148	14.71%
41-50	102	23.94%	120	20.69%	222	22.07%
51-60	138	32.39%	255	43.97%	393	39.07%
61-70	29	6.81%	114	19.66%	143	14.21%
71-80	7	1.64%	14	2.41%	21	2.09%
81-90	0	0.00%	5	0.86%	5	0.50%
Column Totals (Check Sum)	426	100.00%	580	100.00%	1,006	100.00%

Doses Received	Males	%	Females	%	All	%
1 dose	72	16.90%	69	11.90%	141	14.02%
2 doses	168	39.44%	285	49.14%	453	45.03%
3 doses	186	43.66%	226	38.97%	412	40.95%
Column Totals (Check Sum)	426	100.00%	580	100.00%	1,006	100.00%

	Males	%	Females	%	All	%
Cases with Normal Blood	27	2.68%	31	3.08%	58	5.77%
Cases with Abnormal Blood	399	97.32%	549	96.92%	948	94.23%

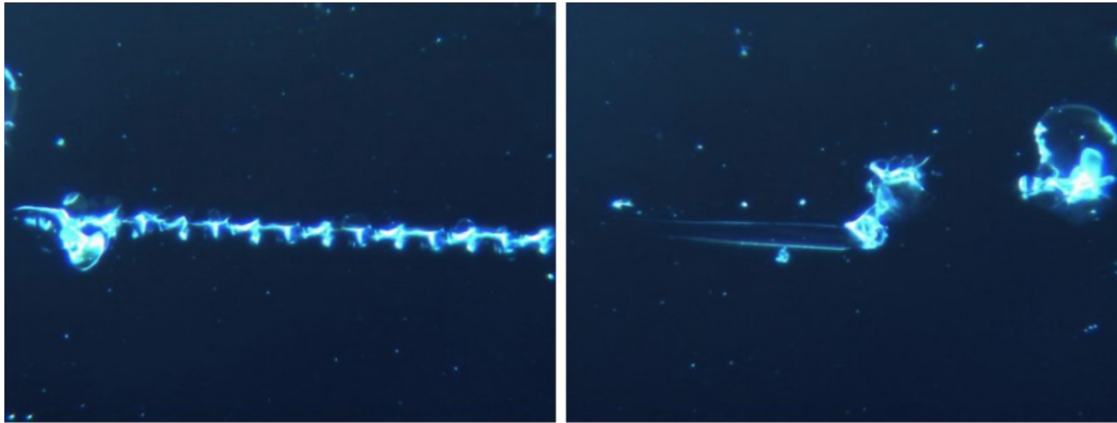
Details of studied cases. (Courtesy of IJVTPR)

They said their results are very similar to the findings of Korean doctors Young Mi Lee, Sunyoung Park, and Ki-Yeob Jeon, titled [“Foreign Materials in Blood Samples of Recipients of COVID-19 Vaccines,”](#) but that their 1,006 subjects represent “a much larger sample.”

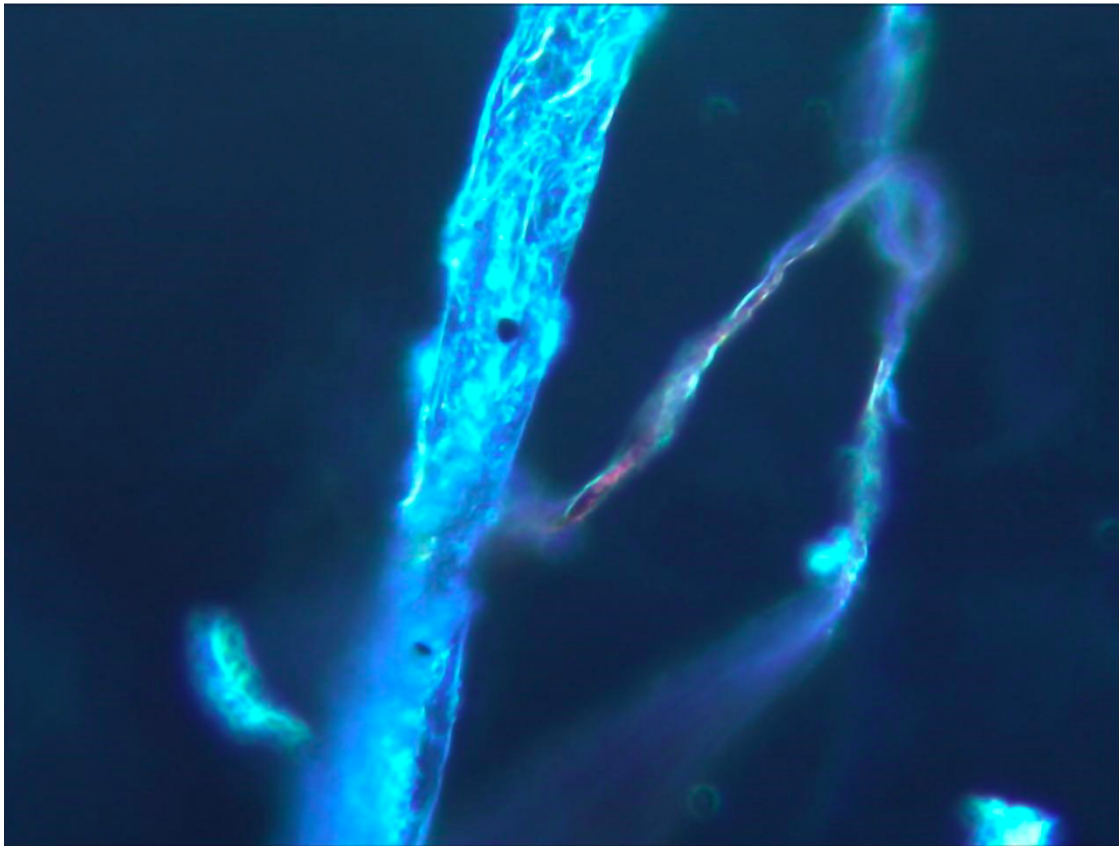
“It could be claimed that, except for our innovative application of dark-field microscopy to mark the foreign metal-like objects in the blood of mRNA injections from Pfizer or Moderna, we have replicated the blood work of the Korean doctors with a much larger sample,” the Italian surgeons wrote.

“Our findings, however, are bolstered by their parallel analysis of the fluids in vials of the mRNA concoctions alongside centrifuged plasma samples from the cases they studied

intensively,” they added.



Images of crystalline aggregation, regular and modular, with apparent “self-similar attitudes of fractal nature.” (Courtesy of IJVTPR)

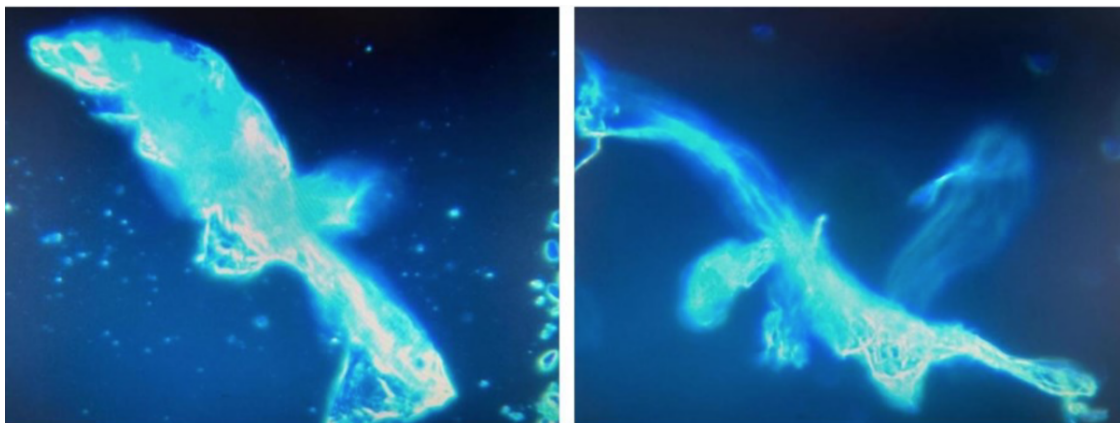


This image at 120x magnification (3x magnification digitally produced) highlights a

typical self-aggregating structuring in fibro/tubular mode. (Courtesy of IJVTPR)

Further studies are needed to define the exact nature of the particles found in the blood and to identify possible solutions to the problems they are evidently causing.

Out of the 1,006 cases, only 58 people showed a completely normal hematological picture via microscopic analysis.



Evident tubular formations at 120x magnification in the aggregative phase showing their complex morphology. (Courtesy of IJVTPR)

The researchers cited numerous studies to back up their findings, including the “well-known” tendency of fibrin to cluster, vascular toxicity of the spike protein, and other adverse effects.

They picked four cases and analyzed their pre and post-vaccination health status, while showing dark field microscopic images.

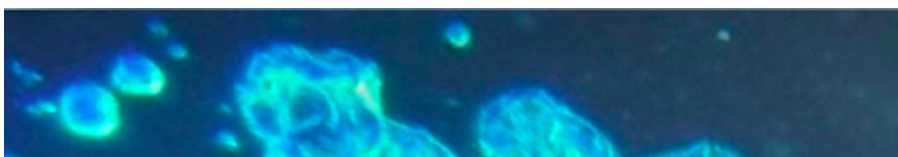
“We assert unequivocally that the 4 cases described in this series are representative of the 948 cases in which extraordinarily anomalous structures and substances were found,” the researchers wrote.

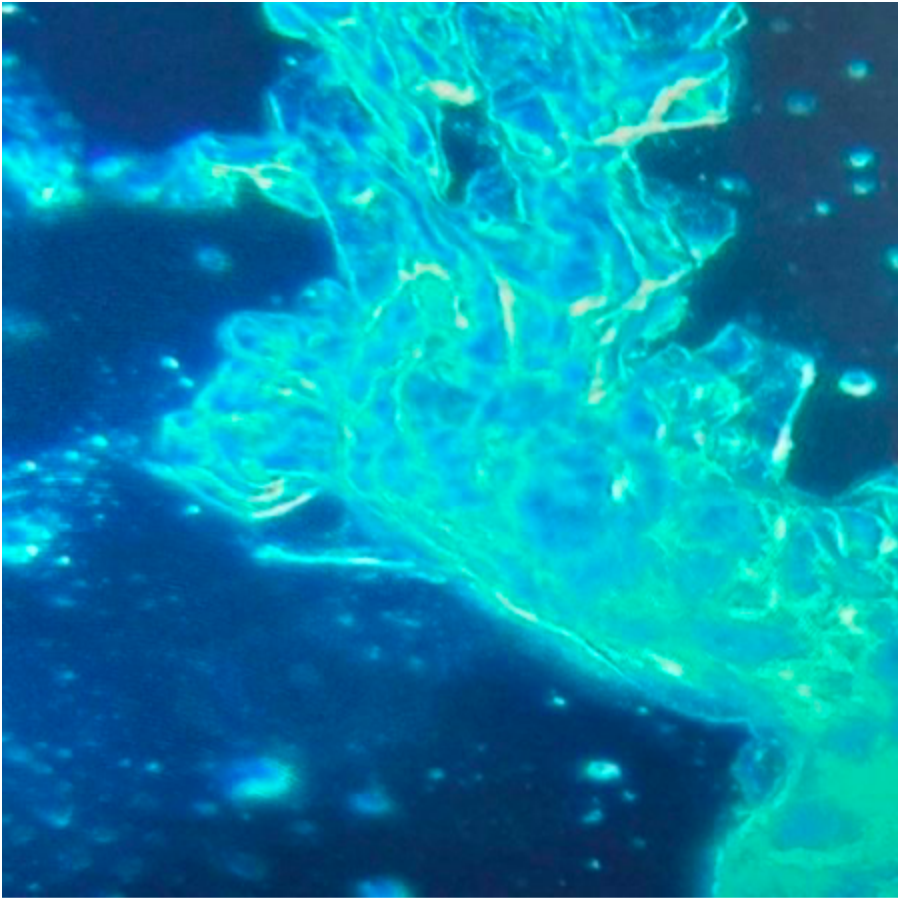


In this case, the assembly of particles takes on crystalline features; furthermore, there is an area of close influence, butterfly wings, in the context of which a crystalline-type organization occurs. (Courtesy of IJVTPR)

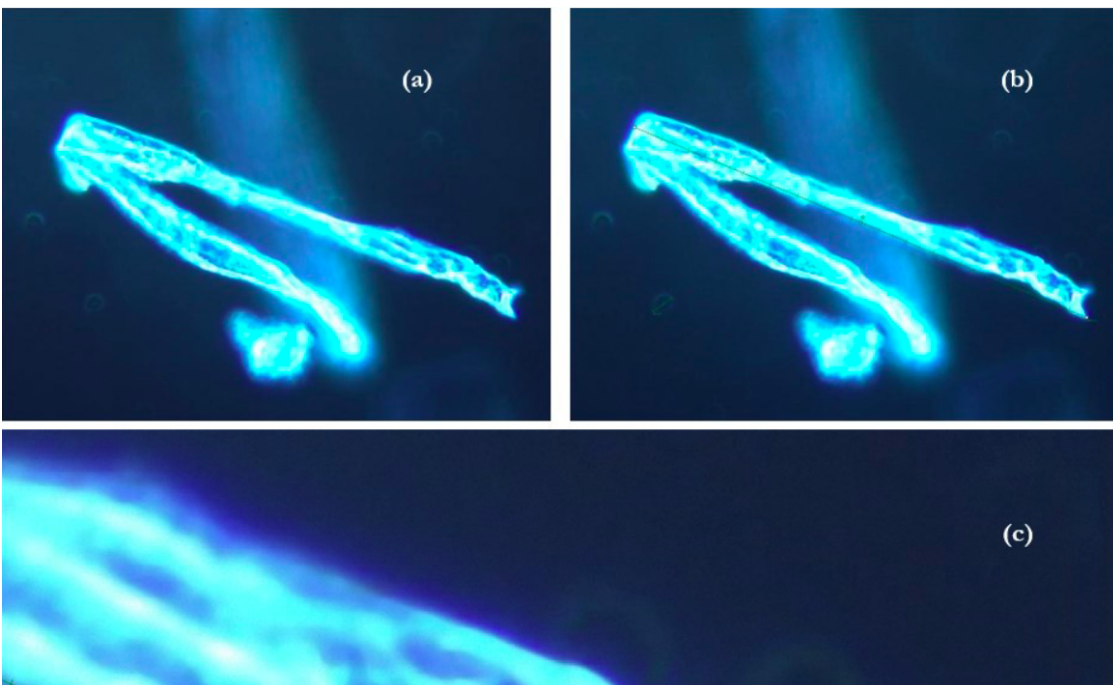
“In conclusion, such abrupt changes as we have documented in the peripheral blood profile of 948 patients have never been observed after inoculation by any vaccines in the past according to our clinical experience. The sudden transition, usually at the time of a second mRNA injection, from a state of perfect normalcy to a pathological one, with accompanying hemolysis, visible packing and stacking of red blood cells in conjunction with the formation of gigantic conglomerate foreign structures, some of them appearing as graphene-family super-structures, is unprecedented. Such phenomena have never been seen before after any ‘vaccination’ of the past,” the researchers stated.

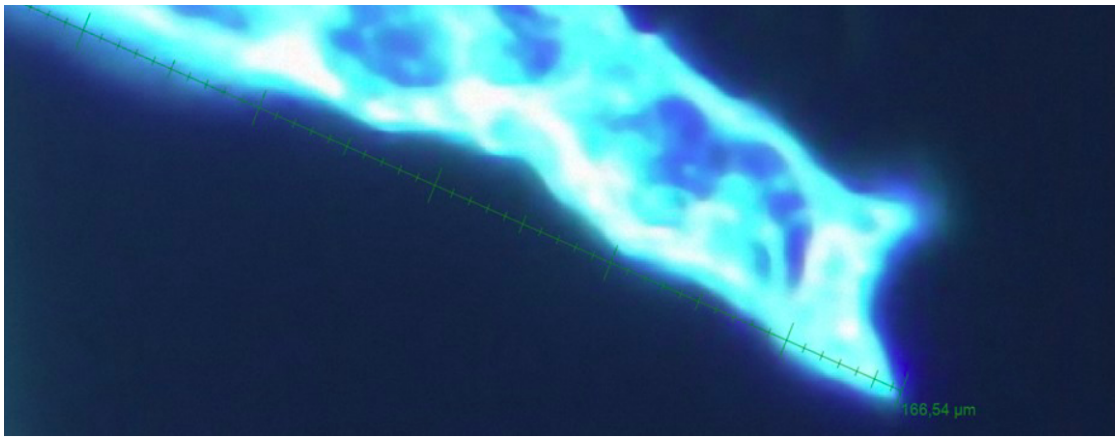
“In our experience as clinicians, these mRNA injections are very unlike traditional ‘vaccines’ and their manufacturers need, in our opinions, to come clean about what is in the injections and why it is there.”





Again, at 120x magnification, geometric figures tend to take shape in extremely complex aggregates. (Courtesy of IJVTPR)





A highly structured fibro-tubular configuration of structures that can coalesce together, reaching dimensions ten times their initial size. In (a) and (b) at 40x magnification, we see what appears to be a laminar linkage. In (c), at 120x magnification (3x magnification digitally produced), there is a composite which is 166.54 μm (DeltaPix Software) in length. (Courtesy of IJVTPR)

“In our collective experience, and in our shared professional opinion, the large quantity of particles in the blood of mRNA injection recipients is incompatible with normal blood flow especially at the level of the capillaries,” the authors wrote. “As far as we know, such self-aggregation phenomena have only been

documented after the COVID-19 mRNA injections were first authorized, then, mandated in some countries.”

Graphene?

Graphene oxide is a type of material “considered two dimensional” and also considered “to be the strongest material in the world,” and the most conductive to electricity and heat, according to [graphene-info.com](https://www.graphene-info.com).

Sherri Tenpenny, who has been ahead of the curve in vaccine adverse reactions, believes that these structures could be related to the strange clots [embalmers have been finding](#) in the corpses they treat since around the pandemic.

“Whatever is actually found to be in the shots, whether the components are graphene, aluminum, crystalline amyloid, disintegrated fibrin, highly charged nanotech particles, or something else, the disruption in the blood demonstrated on these slides is devastating and

irrefutable, as are the corresponding histories of the patients involved,” Tenpenny told The Epoch Times.

“The rouleaux formations seen, for example, in figures 8, 16, and 22, represent widespread ‘sticky red blood cells’ which can lead to clots anywhere in the body. Figure 22 is especially frightening as this sample was taken only two days after the second Moderna jab,” she added.

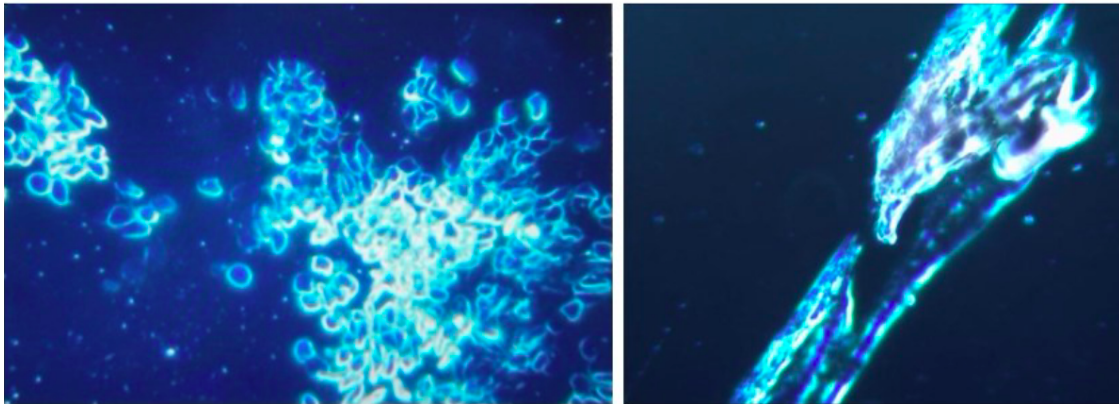
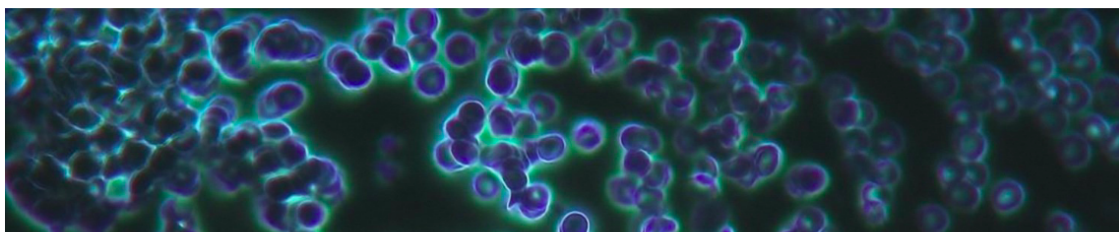


Figure 8. (a) Deformation and erythrocyte aggregation with signs of hemolysis at 40x magnification. (b) A foreign crystallized tubular structure at 120x magnification. (Courtesy of IJVTPR)



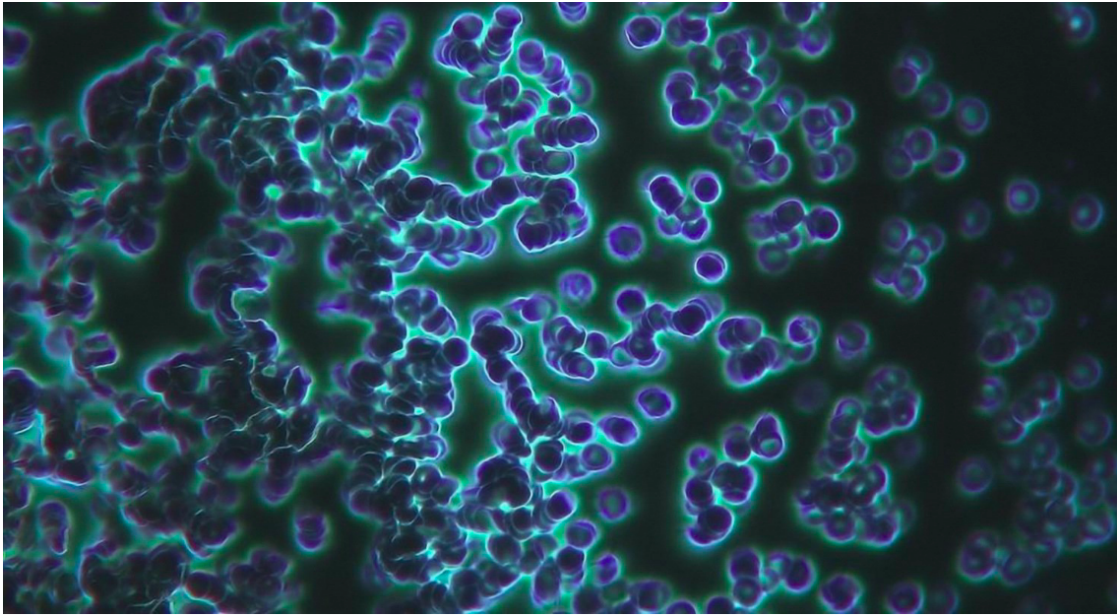


Figure 16. This image, at 40x magnification, is extremely representative of the “Z potential” disorders, with aggregation and “rouleaux stacking” of red blood cells. (Courtesy of IJVTPR)

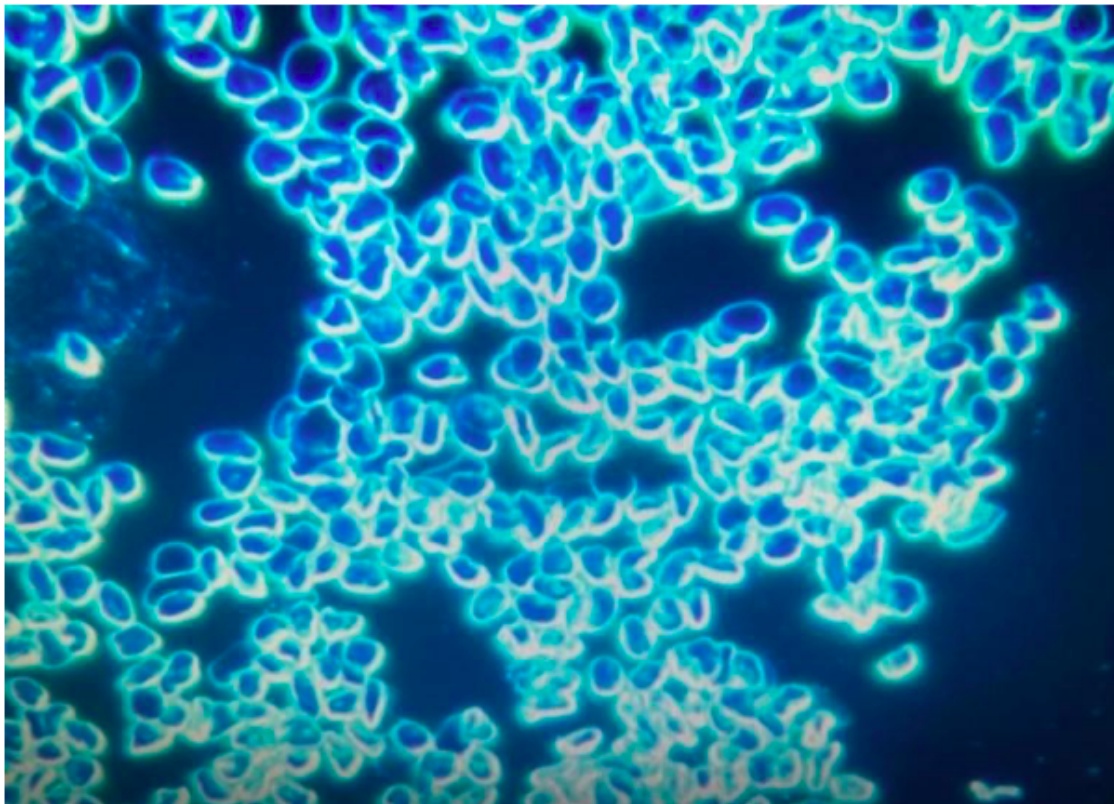




Figure 22. Image at 40x magnification showing aggregation and morphological modification of the erythrocytes two days after the second dose of a Moderna mRNA injection. (Courtesy of IJVTPR)

James Thorp, who has been analyzing the adverse effects of COVID vaccines, thinks that this study could answer some questions about the contents in the vaccines, he shared some of his findings and theories with The Epoch Times.

“Graphene oxide is an artificial, highly magnetic substance with widespread utilization. ... While first discovered in 1859, graphene oxide has extensive commercial application, especially in the field of pharmacologic nanotech delivery systems in medicine. It has the potential of self-assembly within the blood by a variety of potential energetic mechanisms,” Thorp told The Epoch Times.

But Thorp thinks that the phenomenon involving metallic objects sticking to people’s bodies,

apparently magnetically, is not related to the vaccines, as some have claimed.

“Last year many social media posts alleged that the COVID-19 vaccine contained substances that caused attraction to magnets and non-magnetized metals. We conclusively demonstrated that this was a false narrative. The neodymium magnets and non-magnetized paperclips [attached to the human body](#) in about 50 percent of testing subjects unrelated to the COVID-19 vaccines,” Thorp said.

“Interestingly no other medical study could be found in the medical literature that describes human magnetism prior to this [manuscript](#). Magnets and paperclips have been around for centuries, and it would be quite peculiar had they stuck to the human body in the past and not be the focus of intense scrutiny and investigation. One might speculate that graphene oxide in our bodies was not present 30 years ago but slowly accumulated over

decades of exposure resulting in attachment of magnets and paperclips to the human body. It is speculated the electromagnetic energy possibly even from cell towers and/or WIFI could stimulate the assembly of graphene oxide and interfere with the body's own energetics fields," he went on.

Potential Explanation of Abnormal Assemblies

Thorp, his brother Kenneth Thorp, a radiologist, and Paul Walker, a mechanical and electric engineer, published a three part study ([part I](#), [Part II](#), and [Part III](#).) named "Aether, fields & energy dynamics in living bodies" on the Gazette of Medical Sciences.

Thorp is also of the opinion that the metallic-like objects could be the cause of the strange clots that embalmers have been finding.

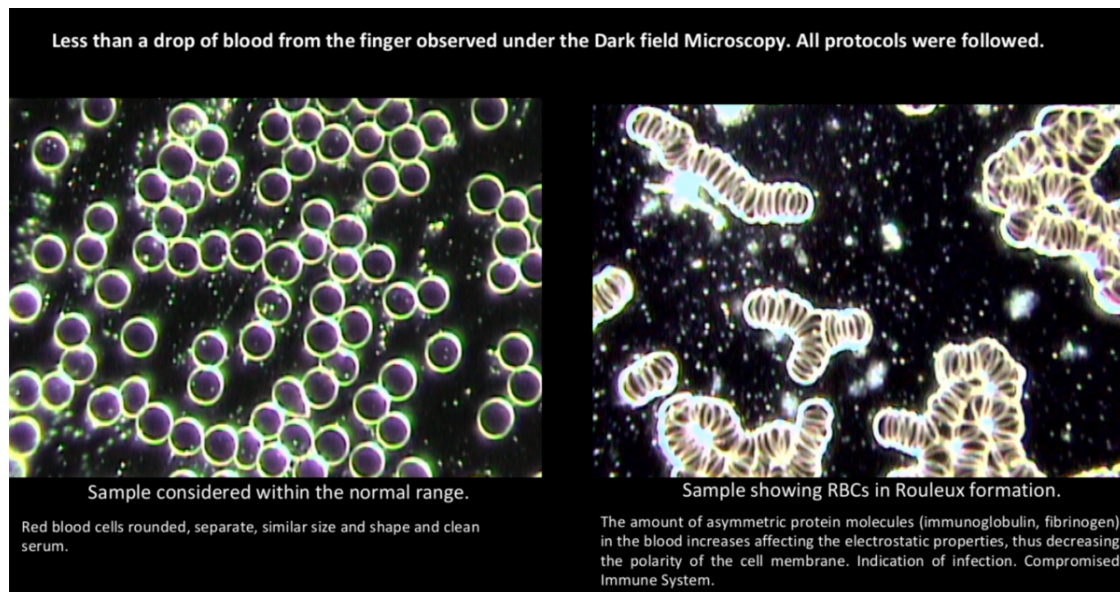
"The basis of most illnesses, including COVID-19, and the basis of the COVID-19

vaccine complications are directly related to energy deficiencies. The vaccine causes disruption and diversion of energy *away* from the water, molecular and cellular levels, away from basic physiologic processes and *toward* the pathologic production of spike protein. This potentially explains many of the abnormal assembly of substances within the intravascular space including the substances noted by Cipelli et al. as well as the misfolded proteins resulting in blood clots, prion disease, Creutzfeldt-Jacob disease, amyloidosis, and countless other diseases,” Thorp said.

Felipe Reitz, a biologist from Brazil, also did peripheral [live blood analysis](#) on vaccinated vs unvaccinated people’s blood using computerized thermographic imaging.

“I have observed that vaccinated individuals present some particular changes in their blood and in their peripheral circulation with more frequency than non-vaccinated,” Reitz told The

Epoch Times.



Dark field Microscopic photo of blood samples.
(Courtesy of Felipe Reitz)

“I am observing individuals with one jab, two jabs, three jabs, and four jabs. Individuals that were vaccinated 18 months ago, 12 months ago, and 6 months ago. This probability permutation is very important to determine the number of injections per time as I noticed it determines the degree of severity of reaction in the person’s body. That could explain why some researchers using the same tools and techniques are differing in their results. That is because they are not considering the

individuality here, time of exposure, and job content. All these variables only create difficulties for the scientific community to reach a consensus although we are all correct in what we are finding, but our findings alone do not represent the total truth,” Reitz said.

“My comparison is based on signs of compromised immune system, indications of radiation exposure, blood electrostatic changes, size and number of platelets, fibrins, infections, chemicals and crystallization structures in the blood samples, and indications of graphene.”

Official Statements

Pfizer told [Reuters](#) in July of 2021 that their COVID vaccines do not contain graphene oxide.

“Graphene oxide is not used in the manufacture of the Pfizer-BioNTech COVID-19 vaccine,”

Pfizer’s senior associate of Global Media Relations told the outlet.

James Smith, the former President and Chief

Executive Officer of Thomson Reuters is a board member of Pfizer.

According to a [fact sheet](#) issued by the FDA, the Moderna vaccine does not contain graphene oxide.

Moderna and Pfizer did not respond to requests for comment.

Update: The headline has been revised to include important context. It was only symptomatic people who were vaccinated that developed the symptoms.





Follow

Enrico Trigoso is an Epoch Times reporter focusing on U.S. politics, health news, social issues, and a wide range of topics.